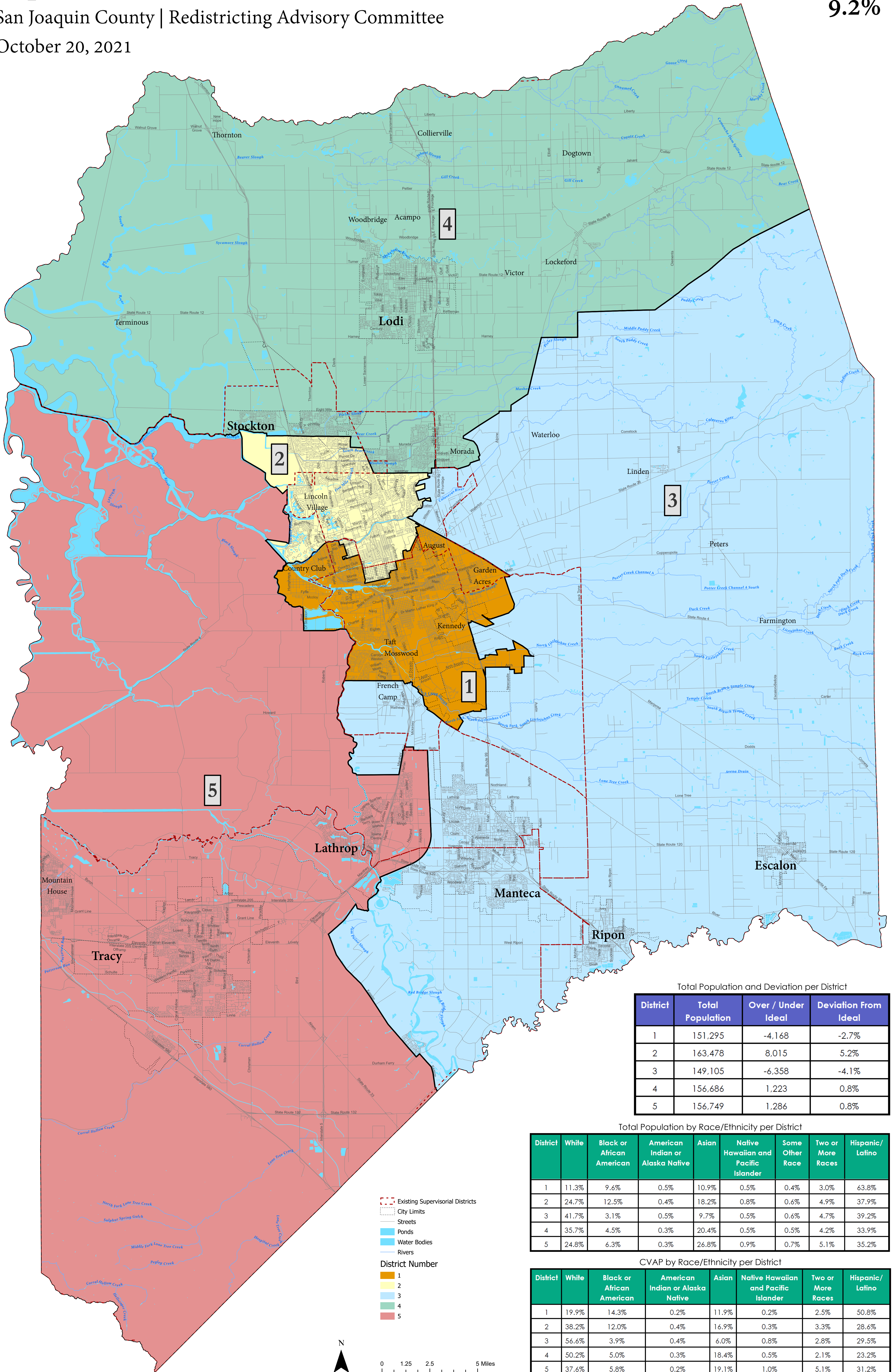


Supervisory Districts Draft Plan A2

San Joaquin County | Redistricting Advisory Committee

October 20, 2021

Total Deviation
9.2%



Total Population and Deviation per District

District	Total Population	Over / Under Ideal	Deviation From Ideal
1	151,295	-4,168	-2.7%
2	163,478	8,015	5.2%
3	149,105	-6,358	-4.1%
4	156,686	1,223	0.8%
5	156,749	1,286	0.8%

Total Population by Race/Ethnicity per District

District	White	Black or African American	American Indian or Alaska Native	Asian	Native Hawaiian and Pacific Islander	Some Other Race	Two or More Races	Hispanic/Latino
1	11.3%	9.6%	0.5%	10.9%	0.5%	0.4%	3.0%	63.8%
2	24.7%	12.5%	0.4%	18.2%	0.8%	0.6%	4.9%	37.9%
3	41.7%	3.1%	0.5%	9.7%	0.5%	0.6%	4.7%	39.2%
4	35.7%	4.5%	0.3%	20.4%	0.5%	0.5%	4.2%	33.9%
5	24.8%	6.3%	0.3%	26.8%	0.9%	0.7%	5.1%	35.2%

CVAP by Race/Ethnicity per District

District	White	Black or African American	American Indian or Alaska Native	Asian	Native Hawaiian and Pacific Islander	Two or More Races	Hispanic/Latino
1	19.9%	14.3%	0.2%	11.9%	0.2%	2.5%	50.8%
2	38.2%	12.0%	0.4%	16.9%	0.3%	3.3%	28.6%
3	56.6%	3.9%	0.4%	6.0%	0.8%	2.8%	29.5%
4	50.2%	5.0%	0.3%	18.4%	0.5%	2.1%	23.2%
5	37.6%	5.8%	0.2%	19.1%	1.0%	5.1%	31.2%

- Existing Supervisory Districts
 - City Limits
 - Streets
 - Ponds
 - Water Bodies
 - Rivers
- District Number
- 1 1
 - 2 2
 - 3 3
 - 4 4
 - 5 5

